

 WHITEPYTHON





At WhitePython™, we create innovative and modern reptile products that are designed to exceed the needs of our customers with function and quality.

Launched in 2012, our brand has quickly pioneered the way in LED Lighting for reptiles and aesthetically pleasing heating solutions.

We now have our sights firmly set on new solutions for a range of reptile keeping products. To stay up to date, please go to whitepython.com to join our mailing list or visit our facebook page.

I hope you enjoy our catalogue.

Yours

Chris Jones
CEO WhitePython™



MODULAR LED LIGHTS

SUPER SLIM, ENERGY EFFICIENT & LONG LIFE LIGHTING FOR REPTILES

The WhitePython™ Modular LED Lighting Systems offer a modern approach to lighting your reptile's terrarium. With a similar set-up cost to a standard fluorescent light, yet running costs at around one third, these offer almost immediate savings to all reptile keepers.

Unlike other lighting systems, they can be installed in a matter of seconds. With it's simple magnetic tape fixing, you can position the lights in the desired area without the need for any screws or fixings. What's more, with it's innovative auxiliary fittings, there is no need to unwire plugs to poke leads through the back of the terrarium.

Key Benefits

- Energy efficient, only 3.6 Watts per strip
- Quick & simple installation
- Ultra long life – 50,000 hours of light
- 10 x longer life than fluorescent lights
- 3 year warranty



DAYLIGHT WHITE LED LIGHT KITS

A vibrant white light ideally suited for daytime lighting for all reptiles. Highly recommended for Leopard Gecko, Corn Snake and Ball Python set-ups.

Does not emit UV.

Available in the following sizes:

- WPY061: Daylight White Mini 1ft Kit
- WPY016: Daylight White 2ft Kit
- WPY017: Daylight White 3ft Kit
- WPY018: Daylight White 4ft Kit

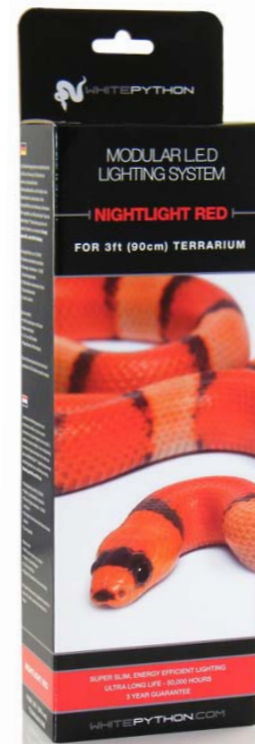
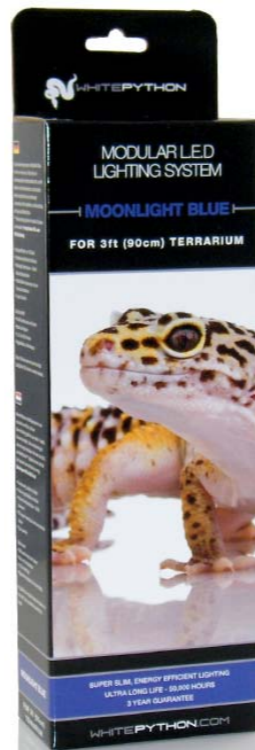
MOONLIGHT BLUE LED LIGHT KITS

A bright moonlight effect, perfect for illuminating colourful reptiles during the late evening hours.

Note: For certain colour morph reptiles with greater sensitivity to light, such as albinos, we would recommend using this light in conjunction with the LED Dimmer. Not recommended to be used for the entire night.

Available in the following sizes:

- WPY062: Moonlight Blue Mini 1ft Kit
- WPY019: Moonlight Blue 2ft Kit
- WPY020: Moonlight Blue 3ft Kit
- WPY021: Moonlight Blue 4ft Kit



NIGHTLIGHT RED LED LIGHT KITS

A warm coloured night light designed to replicate a deep red sunset in the wild.

Note: For certain colour morph reptiles with greater sensitivity to light, such as albinos, we would recommend using this light in conjunction with the LED Dimmer. Not recommended to be used for the entire night.

Available in the following sizes:

- WPY063: Nightlight Red Mini 1ft Kit
- WPY022: Nightlight Red 2ft Kit
- WPY023: Nightlight Red 3ft Kit
- WPY024: Nightlight Red 4ft Kit



JUNGLE GREEN LED LIGHT KITS

Our Jungle Green LED Lights offer a totally unique and modern concept to keeping Jungle or Rainforest dwelling reptiles. The low wattage lights are designed to replicate natural sunlight after being filtered through the green leaves of a Jungle canopy.

For those who wish to have a slightly brighter, but still green light, we recommend using the Daylight White light system in conjunction with the Jungle Green lights.

Available in the following sizes:

- WPY064: Jungle Green Mini 1ft Kit
- WPY035: Jungle Green 2ft Kit
- WPY036: Jungle Green 3ft Kit
- WPY037: Jungle Green 4ft Kit





LED LIGHT MID SECTION

Mid Section LED Light Strips are suitable for connecting multiple LED strips together. The female connector connects to the light or cable before it and the male connector at the other end will connect to the next light strip in the chain. This is the choice of strip if someone wishes to extend their existing lighting kit.

Comes complete with magnetic adhesive strips.

Available in the following colours:

- WPY038: Daylight White Mid Section
- WPY040: Nightlight Red Mid Section
- WPY042: Moonlight Blue Mid Section
- WPY044: Jungle Green Mid Section

LED LIGHT END SECTION

For those who want to purchase a single light strip, the end section version would be the correct choice, as this comes as standard with a protective metal end cap. This is essentially “the end of the line”.

Comes complete with magnetic adhesive strips.

Available in the following colours:

- WPY039: Daylight White End Section
- WPY041: Nightlight Red End Section
- WPY043: Moonlight Blue End Section
- WPY045: Jungle Green End Section



DAYLIGHT WHITE



MOONLIGHT BLUE



JUNGLE GREEN



NIGHTLIGHT RED



MALE TO FEMALE EXTENSION CABLE

The Male to Female Extension Cable is a very simple extension that fits in between any of the WhitePython™ LED light strips.

Ideal if you're looking to extend your lighting kit across multiple terrariums, or perhaps even creating a second row of lights within your terrarium.

Models:

- WPY049: 20cm M/F Extension
- WPY050: 40cm M/F Extension



POWER CABLE

If you purchase individual LED light strips, you will need to purchase an LED Power Cable which fits in between your Power Supply and Light Strip. Available in 2 lengths, the 30cm Power Cable comes as standard in all LED light kits. However, the 1m Power cable is ideal for those who need a further reach.

Models:

- WPY051: 30cm Power Cable
- WPY052: 1m Power Cable



4 WAY EXTENSION

If you're looking to connect multiple terrarium LED lights together, the 4 Way Extension is the ideal cable for you. This simple extension fits in between the LED Power Supply and the Power Cable.

Please note, you will need extra Power Cables to connect each extension to your light strips.

Models:

- WPY054: 4 Way Extension Cable



AUXILIARY TO FEMALE EXTENSION

This cable, combined with a power cable creates an alternative to the Male to Female extension cables. By combining the two it allows you to extend your lighting over a larger area and through multiple terrariums without having to cut wires or drill larger holes.

Models:

- WPY053: Aux to Female Extension

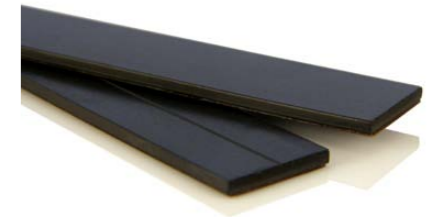


METAL FIXING CLIPS

If you're looking for something a little stronger than the Magnetic Adhesive strips, the Metal clips are ideal. Within each pack there are 4 metal clips and 4 self-tapping screws, ideal for screwing into a standard melamine terrarium. One clip per LED strip is recommended for standard terrariums; however, if you have larger reptiles, using 2 clips per strip will offer added strength.

Models:

- WPY055: LED Metal Clips



MAGNETIC ADHESIVE

Spare magnetic strips for use if you need to move your lights to a new terrarium or if over time the adhesive wears off.

Each pack contains 4 sets of magnets.

Models:

- WPY056: Magnetic Adhesive



LED POWER SUPPLIES

If you would like to extend your LED lighting kit or customise your lighting centre, you may wish to purchase a different LED Power Supply unit. We offer three sizes of power supply, with the largest 60W version being able to safely power up to 16 single WhitePython LED light strips.

Please note, you will need a Power Cable in-between these power supplies and the LED light strip. If you wish to power several terrariums using a single power supply, you could combine our 4-way extension cable which would allow you to branch off a single power supply to various terrariums.

Models:

- WPY046: 18W Power Supply (up to 5 strips)
- WPY047: 30W Power Supply (up to 8 strips)
- WPY048: 60W Power Supply (up to 16 strips)



LED DIMMER

For use with all WhitePython™ LED Lights, the LED Dimmer can dim any LED light to the desired lighting level.

The LED Dimmer simply sits in between the LED Power Supply and the LED Power Cable, which then connects to your chosen light unit. This small, manual dimmer is simple and efficient in design, being very easy to use and install.

Rated at 24W, capable of dimming up to 6 LED strips.

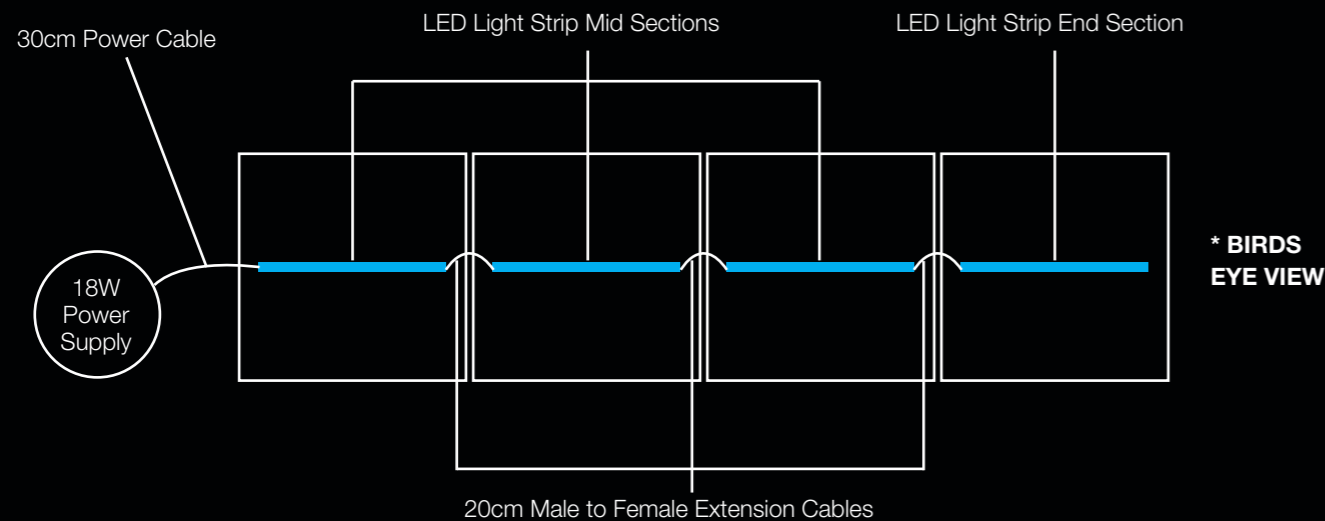
Models:

- WPY057: LED Dimmer



LED LIGHTING EXAMPLE 1

Connecting a series of strips together across the top of mesh roof terrariums.

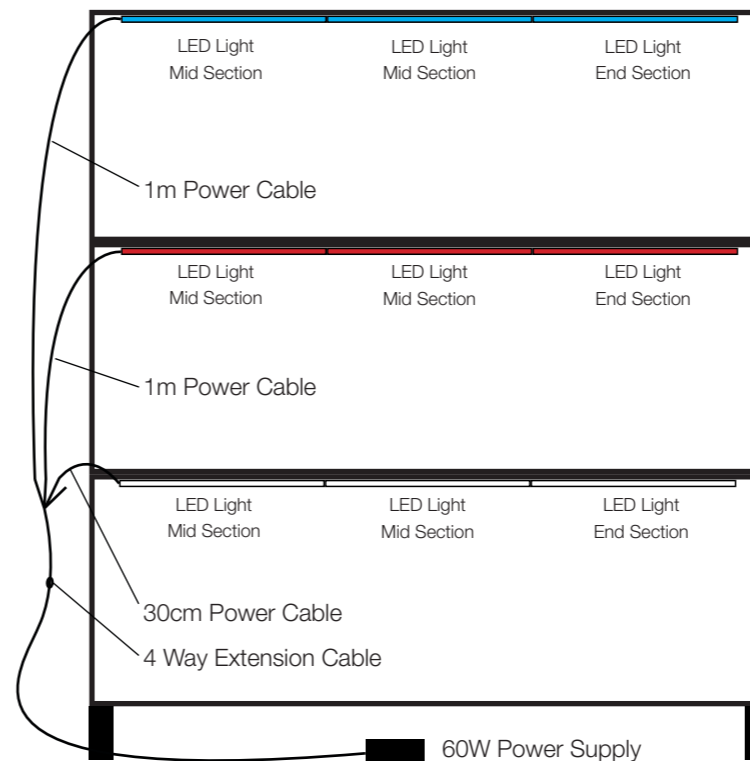


What to Buy:

Using the example above, we would recommend purchasing 1 x 4ft LED Kit of your colour choice. This contains everything except the 20cm Male to Female Extension Cables which can be purchased separately. In this case, the extension cables only need to be short, so the 20cm Male to Female Extension Cable is ideal. However, if you are unsure about the length you require, the 40cm Male to Female Extension Cables will give you a little more flexibility.

LED LIGHTING EXAMPLE 2

Connecting a 3ft stack of terrariums together using a single power source.



In this example we see a stack of 3 terrariums all lit up from a single power source. This saves on socket space and limits messy wires. Notice, there are 9 light strips in this terrarium stack, so a 60W power supply is required.

This power supply leads to a 4 Way extension cable, which then branches off to the 3 terrariums. The first terrarium will only need a 30cm power cable as it's so close, the other 2 will need to use a 1m power cable.

These cables then connect directly to the light strips which can be any colour you wish.

What to Buy:

- 1 x 60W Power Supply
- 2 x 1m Power Cable
- 1 x 30cm Power Cable
- 1 x 4 Way Extension
- 6 x LED Light Mid Section
- 3 x LED Light End Section

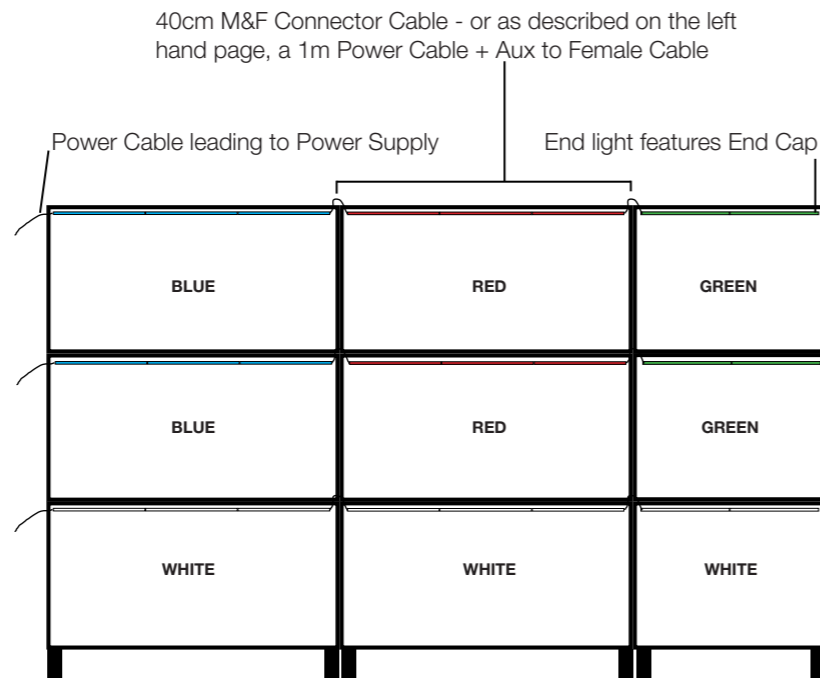
LED LIGHTING EXAMPLE 3

Connecting multiple LED strips together through different terrariums.

Unfortunately, there are too many lights in this entire bank to run from one single power source. So, to offer the best level of control we would recommend working from 3 separate 30W power supplies; one for each row.

WARNING: You will notice we have recommended using 40cm Male to Female connectors which would sit in-between each terrarium, connecting the lights together into one long row. This will work if you position the lights towards the rear of each terrarium. However, if you wish for the lights to be positioned towards the front, these connectors will not be long enough. In which case, you will need to replace each 40cm connector with a 1m Power Cable, plus a 30cm Aux to Female Connector.

Colour Choice: In this example we have demonstrated how you can use various colour lights all connecting through each other. You may replace these colours with your preferred option.



Control for Top Row

- 1 x 30W Power Supply
- 1 x 1m Power Cable
- 3 x Blue LED Light Mid Section
- 3 x Red LED Light Mid Section
- 1 x Green LED Light Mid Section
- 1 x Green LED Light End Section
- 2 x 40cm M&F Connectors

Control for Middle Row

- 1 x 30W Power Supply
- 1 x 1m Power Cable
- 3 x Blue LED Light Mid Section
- 3 x Red LED Light Mid Section
- 1 x Green LED Light Mid Section
- 1 x Green LED Light End Section
- 2 x 40cm M&F Connectors

Control for Bottom Row

- 1 x 30W Power Supply
- 1 x 30cm Power Cable
- 7 x White LED Light Mid Section
- 1 x White LED Light End Section
- 2 x 40cm M&F Connectors



ULTRA SLIM HEAT LAMPS

PROFESSIONAL INFRA-RED CERAMIC HEAT EMITTER FOR THE MODERN TERRARIUM



The WhitePython™ Ultra Slim Heat Lamps bring a simple yet professional approach to reptile keeping. Each lamp offers the same level of heat as competing ceramic bulbs but are less than half the height.

This shortened heat lamp offers more space for your reptile to climb and bask under the heat whilst also offering a more aesthetically pleasing terrarium with greater viewing area.

The Ultra Slim Heat Lamps provide a radiant heat source without emitting any light, making them suitable for both day and night use. The infra-red method of heating allows for a basking area directly under the heater, whilst also increasing the ambient temperature of the terrarium.

Available in the following sizes:

WPY010: 60W
WPY011: 100W
WPY012: 150W

CERAMIC LAMP HOLDER

SAFE, DURABLE & PROFESSIONAL FIXING FOR ULTRA SLIM HEAT LAMPS

Designed for use with the WhitePython™ Ultra Slim Heat Lamps, the Ceramic Lamp Holder is capable of working with all E27 Screw fitting bulbs up to 300 Watts.

Featuring high temperature rated Silicone cable, our Ceramic Lamp Holder offers extra safety and durability than competing brands, being able to withstand much hotter temperatures for a prolonged period of time. Also features an on/off switch for easy use.

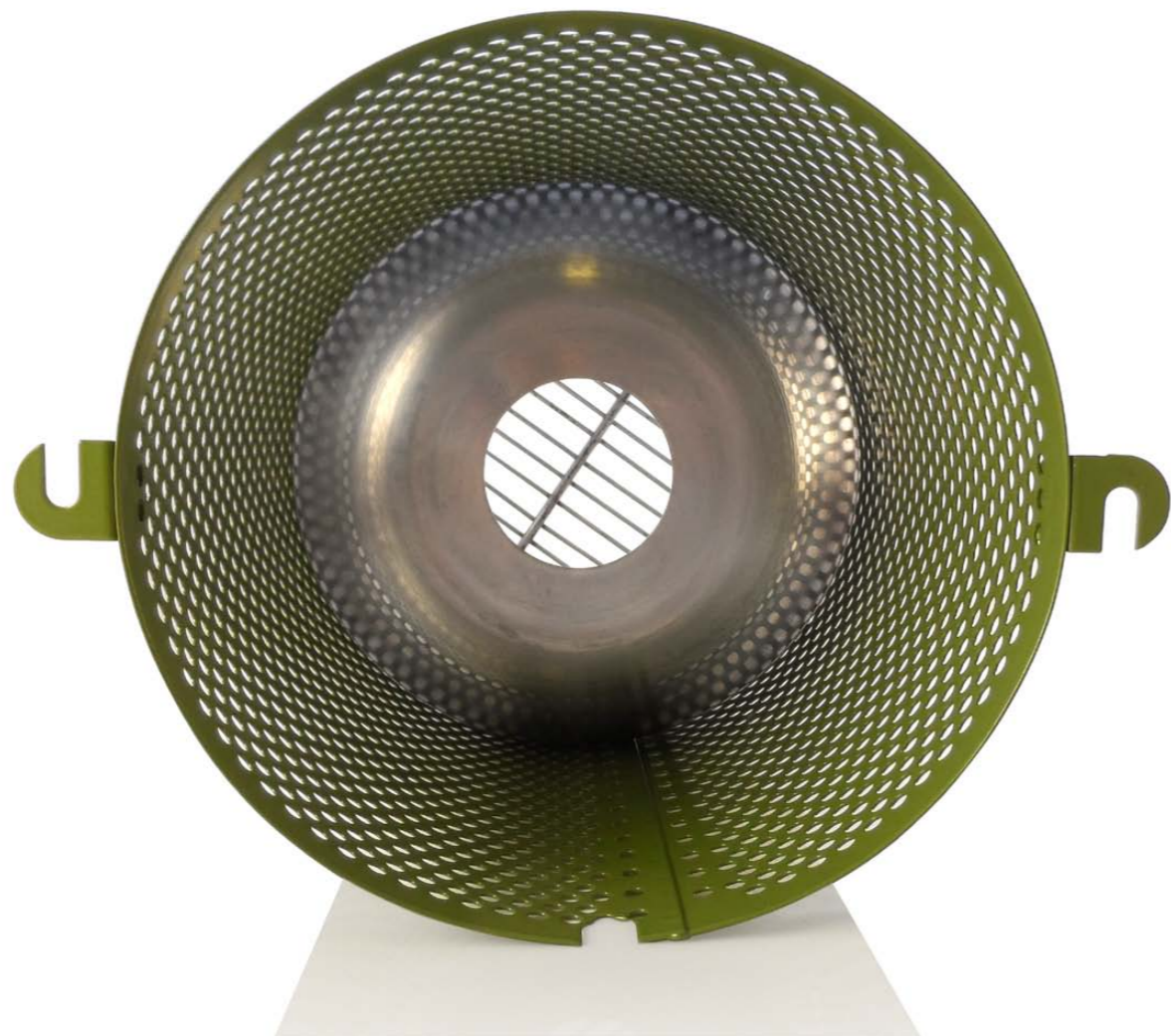
We recommend using the WhitePython™ Heat Guard and Reflector in conjunction with your Ceramic holder and heaters.

Models:

WPY013: Ceramic Lamp Holder (UK)
WPY031: Ceramic Lamp Holder (Euro)







HEAT GUARD & REFLECTOR

STYLISH GUARDS FOR THE MODERN REPTILE KEEPER

The WhitePython™ Ceramic Heat Guard & Reflector is an entirely unique product which exclusively fits the WhitePython Ultra Slim Heat Lamps.

Compared to regular ceramic heat guards which often measure over 25cm tall, the new combination of WhitePython products will reduce the overall height of your ceramic heating unit to just 16cm, with a diameter of 14cm.

What's more, with a built in custom reflector dome your heater will become more energy efficient, reducing the necessary output to achieve the required temperature whilst also reducing the heat that rises into the roof of the terrarium, thereby reducing the possible risk of fire hazards.

The new heat guards feature an inner reflective dome to push heat downwards and a removable mesh grille on the base for easy access to the ceramic heater.

Installation of this innovative heat guard is also made easy with twist lock screw fittings. Simply mark the screw holes into the terrarium roof, drill the screws in leaving just a small gap, then once your heat guard is ready to install, hang over the screw heads, twist the guard and tighten the screws.





EARTH BROWN



MIDNIGHT BLACK



LEAF GREEN



Customer Testimonial

Paul Brodie 10/10

“This is a fabulous product! I’ve recently purchased the ceramic heater, ceramic holder and guard and I can’t rate them highly enough! I chose the green guard and instead of being an eyesore like the usual ceramic heater and guard set up, this actually looks nice in the vivarium and due to it being shorter it’s also less intrusive. A very high quality product that looks nice and performs brilliantly. I’m so pleased I’m in the process of changing my other ceramics over to the WhitePython set.”

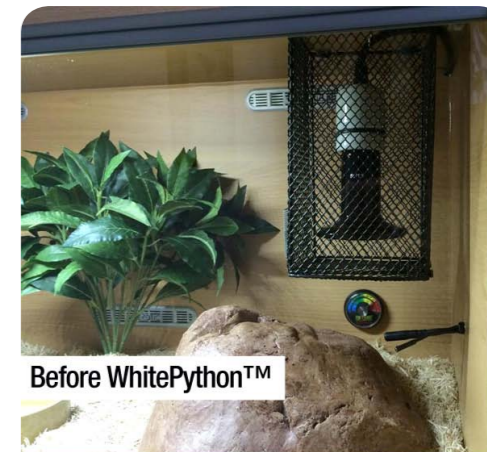
Photos to right submitted by Paul Brodie, with thanks.

Available in the following colours:

WPY065: Heat Guard & Reflector - Midnight Black

WPY066: Heat Guard & Reflector - Leaf Green

WPY067: Heat Guard & Reflector - Earth Brown



Before WhitePython™



with WhitePython™
Safer, more Efficient, Smaller & Prettier



DIGITAL THERMOMETER - HYGROMETER

Modern Digital Thermometer & Hygrometer to measure the temperature and humidity in your terrarium. Features attaching clip and suction cup and comes complete with batteries.

Temp Range: $-5^{\circ}\text{C} \sim 50^{\circ}\text{C}$ | Humidity: 20%Rh ~ 90%
RhTemp Accuracy: $\pm 2^{\circ}\text{C}$ | Humidity Accuracy: $\pm 5\%$

WPY068: Digital Thermometer - Hygrometer

DIGITAL MAX-MIN THERMOMETER

Modern Digital Thermometer with maximum and minimum temperature reading capability through external sensor. Features attaching clip and suction cup and comes complete with batteries.

Measurement Range: $-50^{\circ}\text{C} \sim 70^{\circ}\text{C}$
Temperature Accuracy: $\pm 2^{\circ}\text{C}$

WPY069: Digital Max-Min Thermometer



DRIED FOODS

ALL NATURAL FLOWER MIXES FOR BEARDED DRAGONS & TORTOISES



The WhitePython™ Dried food range consists of all natural mixes of dried flowers and plants which aid in the nutritional intake of your Bearded Dragon or Tortoise.

Ideal as a regular treat, the range of foods are recommended as complimentary diets and are available in Juvenile and Adult packets.

Available in the following flavours:

- WPY003: Bearded Dragon Diet - Adult 85g
- WPY004: Bearded Dragon Diet - Juvenile 85g
- WPY005: Tortoise Diet - Adult 95g
- WPY006: Tortoise Diet - Juvenile 85g





MEDICINAL FOODS

NATURAL DRIED FOODS FOR REPTILES WITH HEALING PROPERTIES

Chamomile

Natural dried Chamomile that promotes pain relief and acts as an anti-bacterial, anti-inflammatory and anti-spasmodic natural medicine. Ideal for Tortoises or Agama Lizards with a cold or diarrhoea.

WPY058 - Chamomile 50g



Nettle Leaves

Natural dried Nettle Leaves to help detoxify and boost the metabolism of your reptile. Ideal for Tortoises or Agama Lizards coming out of hibernation to help get them moving again.

WPY059 - Nettle Leaves 20g





Find us on Facebook
facebook.com/whitepython1



Follow us on Twitter
[@whitepython1](https://twitter.com/whitepython1)



Subscribe to our YouTube
youtube.com/whitepython1



Follow us on Pinterest
pinterest.com/whitepython1





www.whitepython.com

+44 (0)845 5199 076